



Kelowna Yacht Club
Okanagan Women's Regatta
July 4 - 6, 2025
Supplementary Sailing Instructions
(Numbering Corresponds to RRS Appendix S)

4 SIGNALS MADE ASHORE

- 4.1 Signals made ashore will be displayed from a flagpole situated on the western edge of the Commodore's Dock. When flag AP is displayed ashore, '1 minute' is replaced with 'not less than 30 minutes' in Race Signals AP.

5 SCHEDULE OF RACES

Saturday July 5, 2025	First Warning Signal	10:30 am PDT
	Last Warning Signal	3:30 pm PDT
Sunday July 6m 2025	First Warning Signal	10:00 am PDT
	Last Warning Signal	2:00 pm PDT

6 CLASS FLAGS

Fleet 1	Numeral Pennant 1
Fleet 2	Numeral Pennant 2

7 THE COURSES

- 7.2 The course will be displayed at the stern of the RC boat as a series of letters.

8 MARKS

8.2 All marks to be left to port. The following marks can be rounding marks: A, B, C, D, and E.

9 THE START

9.1 The starting line is between a staff displaying an orange flag on the signal vessel and mark X.

9.2 The Start line is to be considered an obstruction and shall not be crossed unless a boat is starting or within her start sequence

9.3 A boat must keep clear of the start area by 50 meters unless the warning signal for her start sequence has been made.

9.4 A boat starting later than 4 minutes after her starting signal will be scored Did Not Start without a hearing. This changes RRS A5.1 and A5.2.

10. THE FINISH

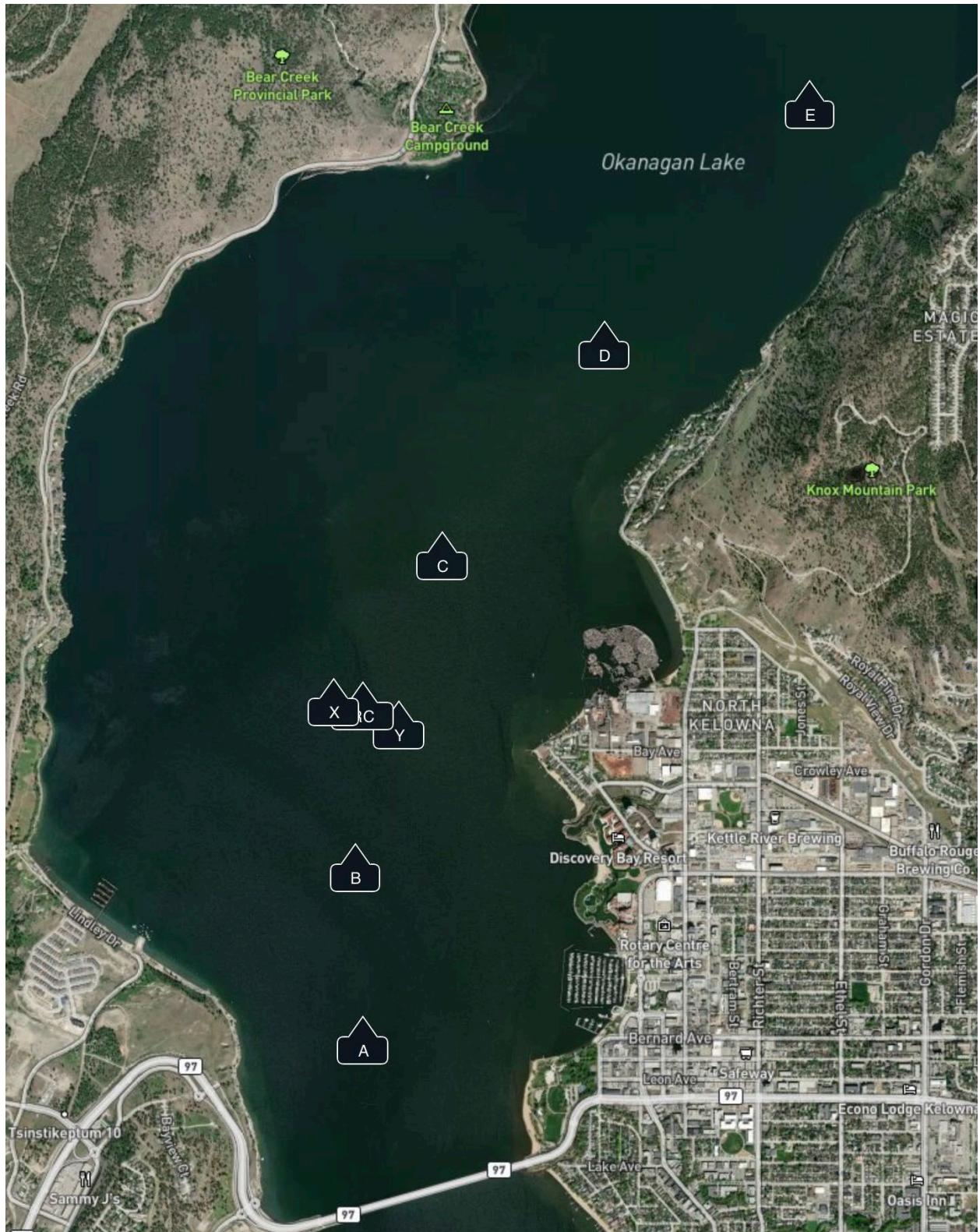
10.1 The finishing line is between the blue flag mounted to the signal boat and the course side of Mark Y.

10.2 If the Race Committee is absent when a boat finishes, she shall report her finishing time, and her position in relation to nearby boats, to the race committee at the first reasonable opportunity.

11 TIME LIMITS

RACE TIME LIMIT	90 minutes
-----------------	------------

Kelowna Yacht Club Course and Marks



Kelowna Yacht Club Mark Coordinates

MARK (South to North)	COORDINATES D°MM.mm
A	49°53.24N 119°30.95W
B	49°53.70N 119°30.98W
X	49°54.14N 119°31.07W
RC	49°54.13N 119°30.95W
Y	49°54.08N 119°30.80W
C	49°54.53N 119°30.62W
D	49°55.09N 119°29.95W
E	49°55.73N 119°29.10W

