



Commodores Cup U35 Invitational Regatta
Kelowna Yacht Club
August 15-17, 2025
 Supplementary Sailing Instructions
(Numbering Corresponds to RRS Appendix S)

4 SIGNALS MADE ASHORE

- 4.1 Signals made ashore will be displayed from a flagpole situated on the western edge of the Commodore's Dock. When flag AP is displayed ashore, '1 minute' is replaced with 'not less than 30 minutes' in Race Signals AP.

5 SCHEDULE OF RACES

Saturday August 16, 2025	First Warning Signal Latest Warning Signal	11 a.m. PDT 4 p.m. PDT
Sunday August 17, 2025	First Warning Signal Latest Warning Signal	10:30 a.m. PDT 2:30 p.m. PDT

6 CLASS FLAGS

U35 Fleet	NUMERAL PENNANT 1
Coached U35 Fleet	NUMERAL PENNANT 2

7 THE COURSES

7.2 Addendum A *Course Diagram*

- 7.3 Legs of the course will not be changed after the preparatory signal. This changes RRS 33.

8 MARKS

8.1 Addendum B *Mark Coordinates*.

9 THE START

9.2 The starting line will be between a staff displaying an orange flag on the signal vessel and the course side of a **green starting mark**

9.3 DP][NP] Boats whose warning signal has not been made shall avoid the starting area during the starting sequence for other races

9.5 A boat starting later than 4 minutes after her starting signal will be scored Did Not Start without a hearing. This changes RRS A5.1 and A5.2.

11 THE FINISH

11.1 The finishing line will be between a staff displaying a blue flag mounted on the signal vessel and the course side of a **red finishing mark**

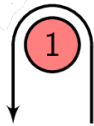
12 TIME LIMITS

RACE TIME LIMIT	90 Minutes
-----------------	------------

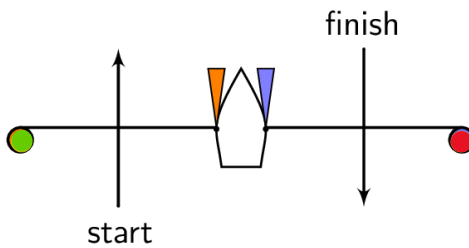
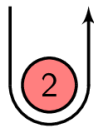


APPENDIX A

COURSE DIAGRAM



wind



Signal Mark rounding order

L1 Start-1-Finish

L2 Start-1-2-1-Finish

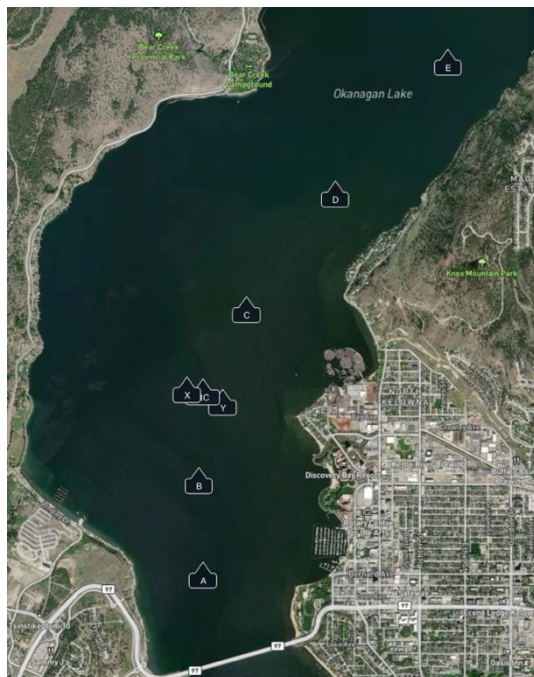
L3 Start-1-2-1-2-1-Finish

North Wind - 1 (D Mark), 2 (C Mark)

South Wind - 1 (A Mark), 2 (B Mark)

APPENDIX B

KELOWNA YACHT CLUB MARK COORDINATES



MARK (South to North)	COORDINATES D°MM.mm
A (1)	49°53.22N 119°31.04W
B (2)	49°53.71N 119°30.97W
X	49°54.15N 119°31.06W
RC	49°54.17N 119°30.92W
Y	49°54.08N 119°30.80W
C (2)	49°54.55N 119°30.59W
D (1)	49°55.09N 119°29.91W
E	49°55.75N 119°29.14W